

# 300 Series



Appreciate All the  
Comforts of Your Home  
with a Premium Vinyl  
Sliding Patio Door



# 300 Series Sliding Patio Door Features



## STANDARD FEATURES:

- Single-point locking hardware
- Welded sash
- 6" thick vinyl frame
- Internal weep system
- Plated steel lock and striker
- Keyed lock cylinder
- Field Reversible. Standard height only
- XO, OX configurations
- 12 gauge steel reinforcing
- Standard 7/8" glazing
- Dual seal weatherstripping
- Exterior glazed
- Integral screen track
- Sloped sill
- Flexible PVC bumpers
- AAMA approved PVC lineal certification
- Standard 5' (59 1/2" X 79 1/2") and 6' (71 1/2" X 79 1/2") size doors meet DP50 standards.
- Sliding screen standard
- Plated brass adjustable tandem rollers
- Security kick lock

## OPTIONAL FEATURES:

- Brass, Satin Nickel hardware
- Various grid options
- Accommodates 1" glazing
- Multi-point locking hardware
- Stainless steel tandem rollers
- Knock down frame available
- Blinds between Glass (5, 6 and 9')



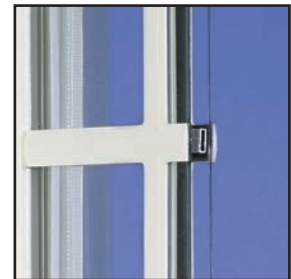
Vinyl threshold cover



Brass plate rollers



Security kick lock



Optional SDL Grids.



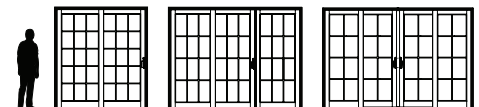
Flat Grids



Sculpted Grids

## 2, 3 and 4 Panel Door Widths:

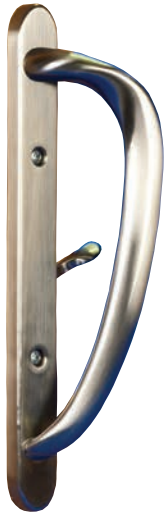
- Standard 2 panel widths are 5', 6' and 8'
- 3 panel (9' and 12') and 4 panel (12')
- Standard height is 79.5"



# 300 Series Sliding Patio Door Finish Options

## HARDWARE STYLE & FINISH OPTIONS:

The optional Elegant style hardware of the 300 Patio Door Collection handles are available in 4 optional finishes and standard white to enhance any style architecture.



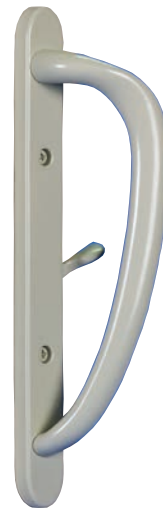
Satin Nickel Finish  
Interior Only



Oil Rubbed Bronze  
Finish Interior Only



Bright Brass Finish  
Interior Only



Tan Finish  
Interior Only



Crème White  
Interior Only

## Standard "D" Hardware Design



Tan Finish  
Standard  
Interior Only



Crème White Finish  
Standard  
Interior Only



Black Finish  
Exterior Handle Only



Tan Finish  
Exterior Handle



Crème White Finish  
Standard  
Exterior Handle

## Exterior Handles

NOTE: The exterior handle attached to patio doors will most closely match the exterior color.  
EXAMPLE: Black & Bronze laminate doors will have a BLACK exterior handle attached.

## Standard Solid Vinyl Colors



Crème White



Tan

## Optional Interior/Exterior Laminates

- Bronze/Black Exterior available on Crème White Interior (only)
- Natural Oak & Cherry woodgrain are only available over crème exterior.



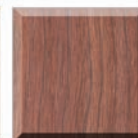
Bronze



Black



Oak

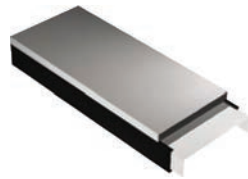


Cherry

Printed color will vary slightly from actual color. Always refer to actual color samples before making color selections.

# 300 Series Sliding Patio Door

## Duralite™



### Duralite™ Spacer System

To ensure your home will be comfortable during the intense heat of summer and the frigid winds of winter upgrade your new windows and doors to our high performance glass package with Duralite™.

- Lowest conductivity warm edge spacer
- Improved condensation resistance
- Superior argon gas retention
- Unique patented design
- Exceeds ENERGY STAR requirements

### Value

The 300 Series Patio Door represents state of the art design in window systems, among the most advanced in the industry. We offer styles and options to fit any architectural requirements – both contemporary and classic. We build to a quality level achieved from years of experience and back it with our Lifetime Limited Warranty.



### Glass Packages

Insulating glass maintains comfort, saves energy, and reduces outside noise. The 300 Series Patio Door insulating glass is made with the following high quality elements.

- Standard Double Strength Glass
- Standard Tempered Safety Glass
- Optional Low E Glass with Argon gas

### Comfort

Choosing windows for your home requires consideration of the light and ventilation desired; both the interior and exterior appearance; the ease with which you can maintain, clean and use everyday; plus their energy performance and sound protection. The 300 Series Patio Door can satisfy all of these requirements but, most of all our windows are designed and built to enhance the comfort and value that you associate with your home.



**Superior Energy Savings Performance With Two Low E Glass Packages\***



**Low-E<sup>2</sup> Glass    Low-E<sup>3</sup> Glass**

**U-Factor**  
**.27**

**Solar Heat Gain Coefficient**  
**.29**

**Visible Transmittance**  
**.54**

**Air Leakage**  
**< 0.3**

**U-Factor**  
**.27**

**Solar Heat Gain Coefficient**  
**.23**

**Visible Transmittance**  
**.51**

**Air Leakage**  
**< 0.3**



**Slocomb Windows & Doors, Inc.**

767 Sans Souci Parkway • Hanover TWP, PA 18706 • Phone: 570-825-3675

For a complete list of product lines, details, and options, visit our website - [www.slocombwindows.com](http://www.slocombwindows.com)